



**CANTONMENTS**

**A HOME OF HAPPINESS**

**AWAITS YOU**





# THE EMBODIMENT OF A GOOD LIFE

An elite residential community set in Accra's most desirable locations envisioned for those who aspire an elevated sense of luxury and comfort.

# LOCATION

European Village is located in the integral part of the capital's most significant districts. This development is in the embassy haven of Ghana, Airport Residential, Ridge, Labone, Cantonments and Roman Ridge. European Village is a stunning modern community that boasts of luxurious range of townhouses. Envisage a new life full of potential when you move to a luxury townhouse in vibrant European Village. European Village is the latest destination of choice for investors and families attracted by the safe and convenient lifestyle, sense of commitment and infectious optimism that creates a perfect environment to embrace your future.





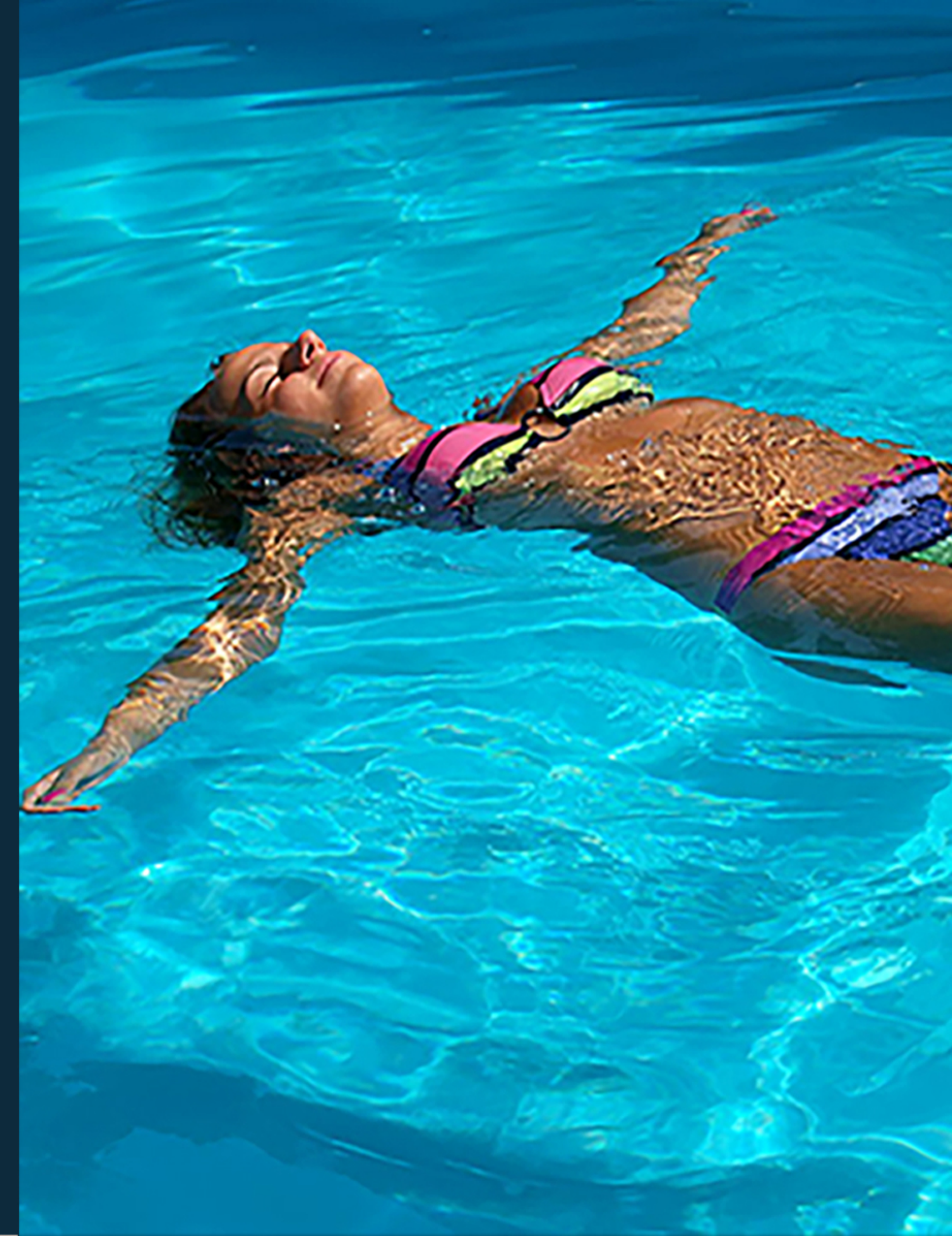
**DESIGNED TO  
COMPLEMENT AND  
ENHANCE A  
PLEASANT LIFE.**

European Village offers you elegant 3 bedrooms detached townhouses in unbeatable centralized locations with features such as 3 bedrooms, 3 halls, 3 kitchens, a family area and a swimming pool.

Each unit has been carefully curated to amplify the sense of space with well-designed living areas and spatial-sensitive layouts.

Meticulous attention to detail and high-quality finishes are evident throughout its design. The use of floor-to-ceiling windows and doorways promote the flow of air and light.

**DESIGNED TO OFFER THE  
DISCERNING BUYER THE BEST  
OF EVERYTHING**



European Village is ideal for homeowners seeking a balance of aesthetics, functionality and security within every unit.



The ensuite presents a rare standard of design with a large built-in vanity, walk-in shower, oversized tub and feature tapware. Offering thoughtful details including extra shelf space and hangers, this charming retreat is the ideal place to wash the day away. Here, each of the finishes schemes embrace a soft, textural master ensuite approach to evoke a sense of calm.



**AESTHETICS, FUNCTIONALITY  
AND SECURITY WITH  
EVERY UNIT**



**A PLACE OF CREATIVITY  
AND IMAGINATION**





**A SOOTHING RESPITE  
FROM THE NOISE  
AND ACTIVITY  
OF MODERN LIFE**

Home's not merely four square walls,  
Though with pictures hung and gilded:  
Home is where affection calls,  
Filled with shrines the heart hath builded!  
Home! go watch the faithful dove,  
Sailing 'neath the heaven above us;  
Home is where there's one to love!  
Home is where there's one to love us !

CHARLES SWAIN



The eastern sky is streaked with red,  
The weary night is done,  
And from his distant ocean bed.  
Rolls up the morning sun

Eugene Field



## THE PERFECT LAUNCHPAD FOR VIBRANT LIVING



3 BEDROOMS



FAMILY AREA



SWIMMING POOL



OPEN PLAN KITCHEN



3 LIVING AREAS



MAID'S ROOM



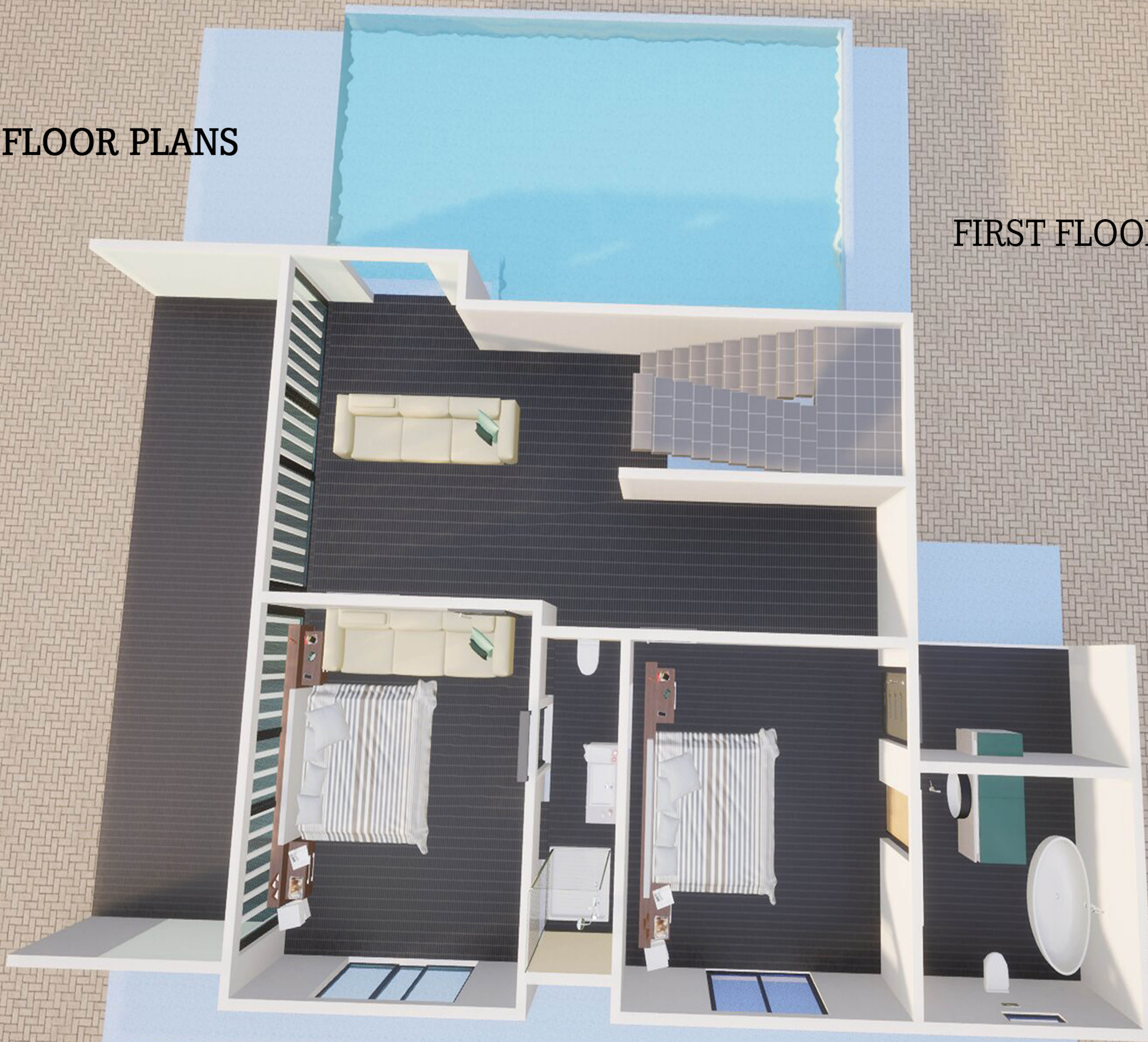
# FLOOR PLANS



# GROUND FLOOR

FLOOR PLANS

FIRST FLOOR



# FLOOR PLANS

# SECOND FLOOR



# FEEL THE WARMTH OF HOME

The ideal solution for families seeking a secure and cozy environment for themselves and their children.

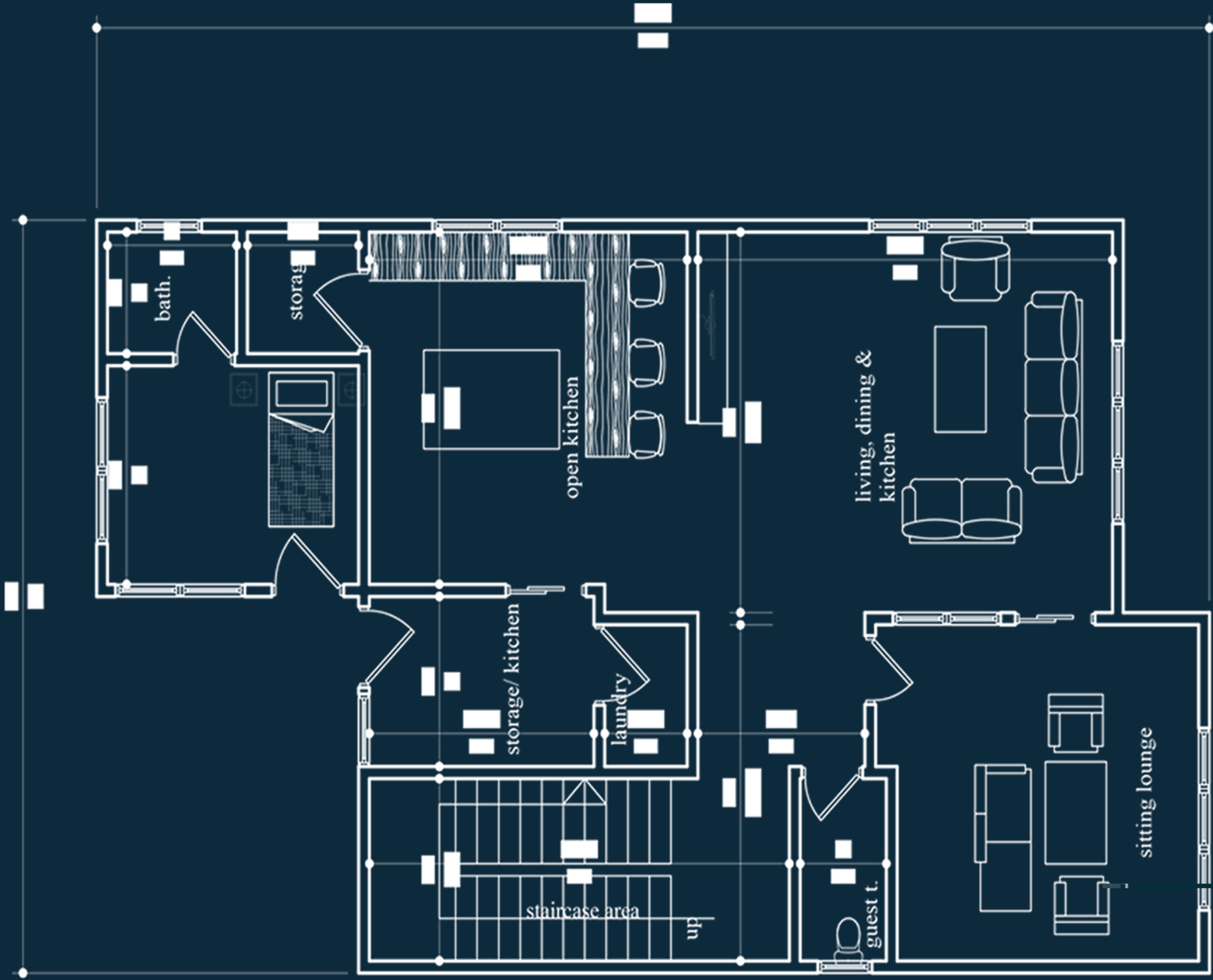




THE  
2012  
FOUNDS  
ROASTERY

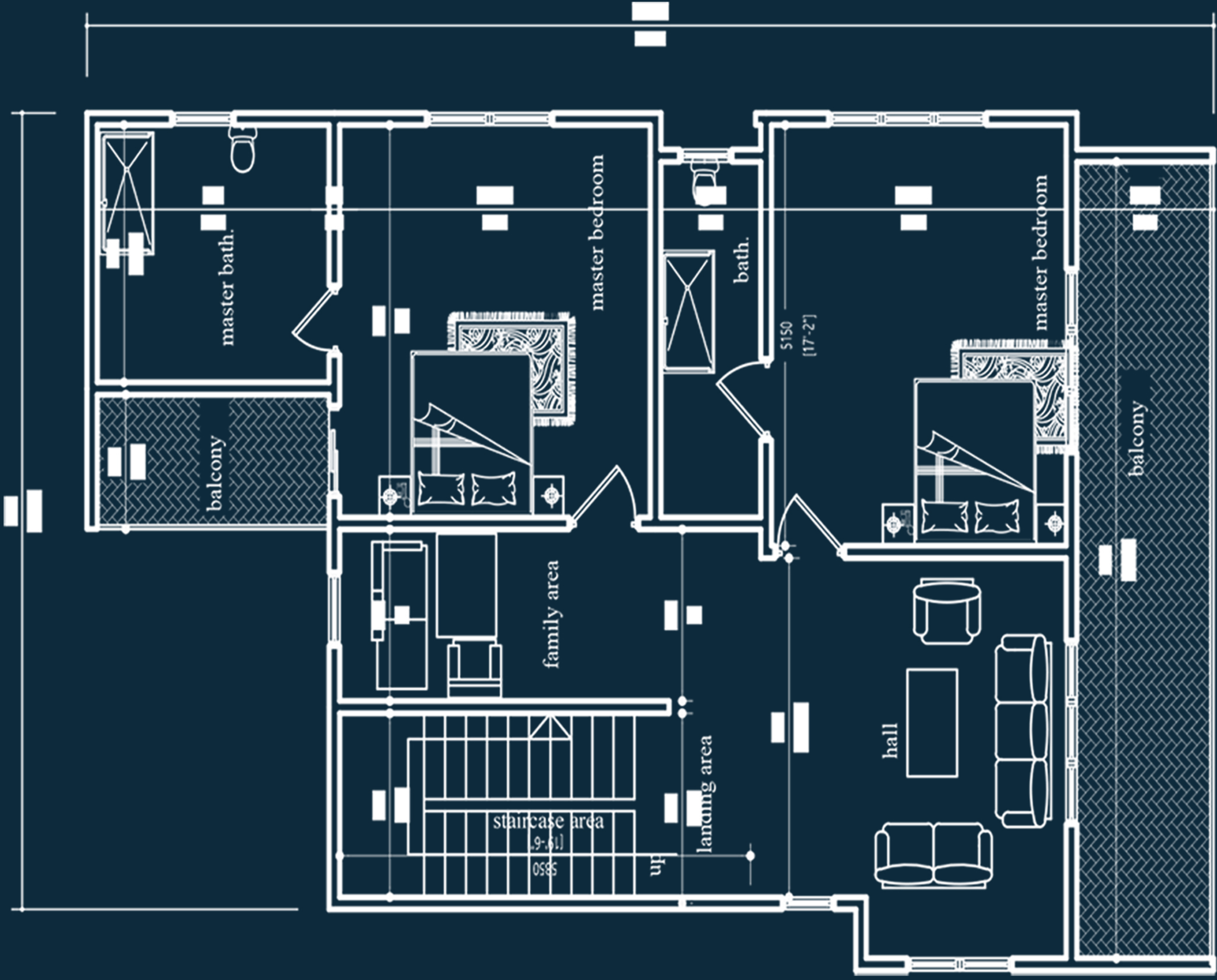


Exceptionally serene rooms for  
wholesome living.



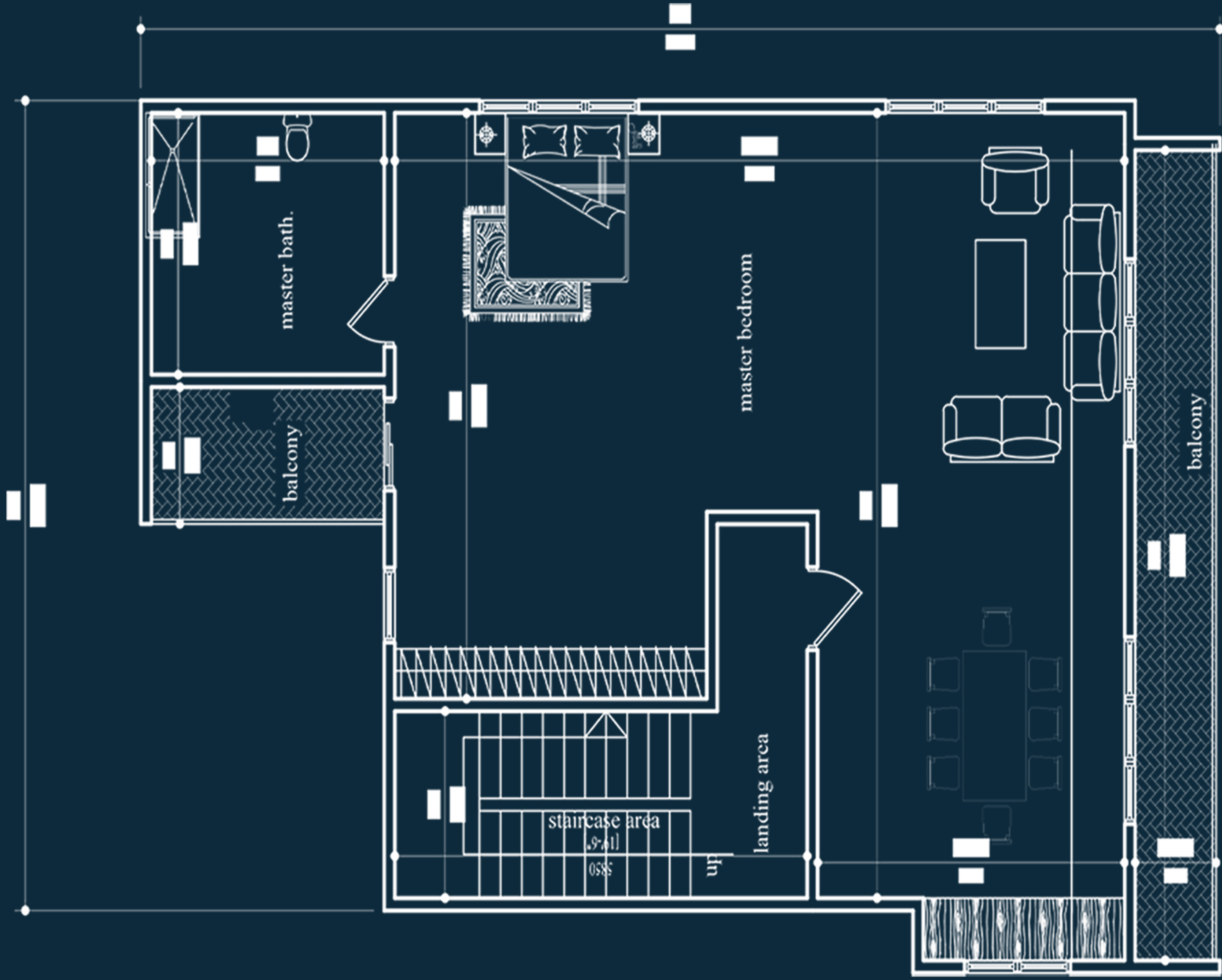
# GROUND FLOOR PLAN

SCALE 1:100



# FIRST FLOOR PLAN

SCALE 1:100



# SECOND FLOOR PLAN

SCALE 1:100













# LOCATIONS NEARBY

## EDUCATION

- Ghana International School
- Association International School
- Roman Ridge School
- Soul Clinic International School
- East Airport International School

## LEISURE

- Polo Beach Club
- Alora Beach Club
- Sandbox Beach Club
- Noldor Residency

## NIGHT LIFE

- Twist Night Club
- Ace Tantra
- Front / Back
- Kruna

## SHOPPING

- Accra Mall
- Koala Shopping Mall
- Palace Shopping Mall

## FITNESS & TRAINING CENTER

- Accra Sports Stadium
- El Wak Sports Stadium
- Aviation Social Center
- Fitness 1 Gym





## **FOR A CONVENIENT AND BALANCED LIFESTYLE**

European Village is central to everything you need, from educational centers, restaurants, shopping malls, hospitals and recreational facilities.

### **RESTAURANTS**

- Honey Suckle
- Smoke 'n' Barrel
- Indulge
- Shogun
- Mokas Restaurant
- Capitol
- Babel
- Bold
- Breakfast 2 breakfast
- Le Petit Oiseau

### **HOTELS**

- Kempinski Hotel
- Movenpick Ambassador Hotel
- Labadi Beach Hotel
- La Palm Royal Beach Hotel
- Marriot Hotel
- Holiday Inn
- Ibis Style Hotel

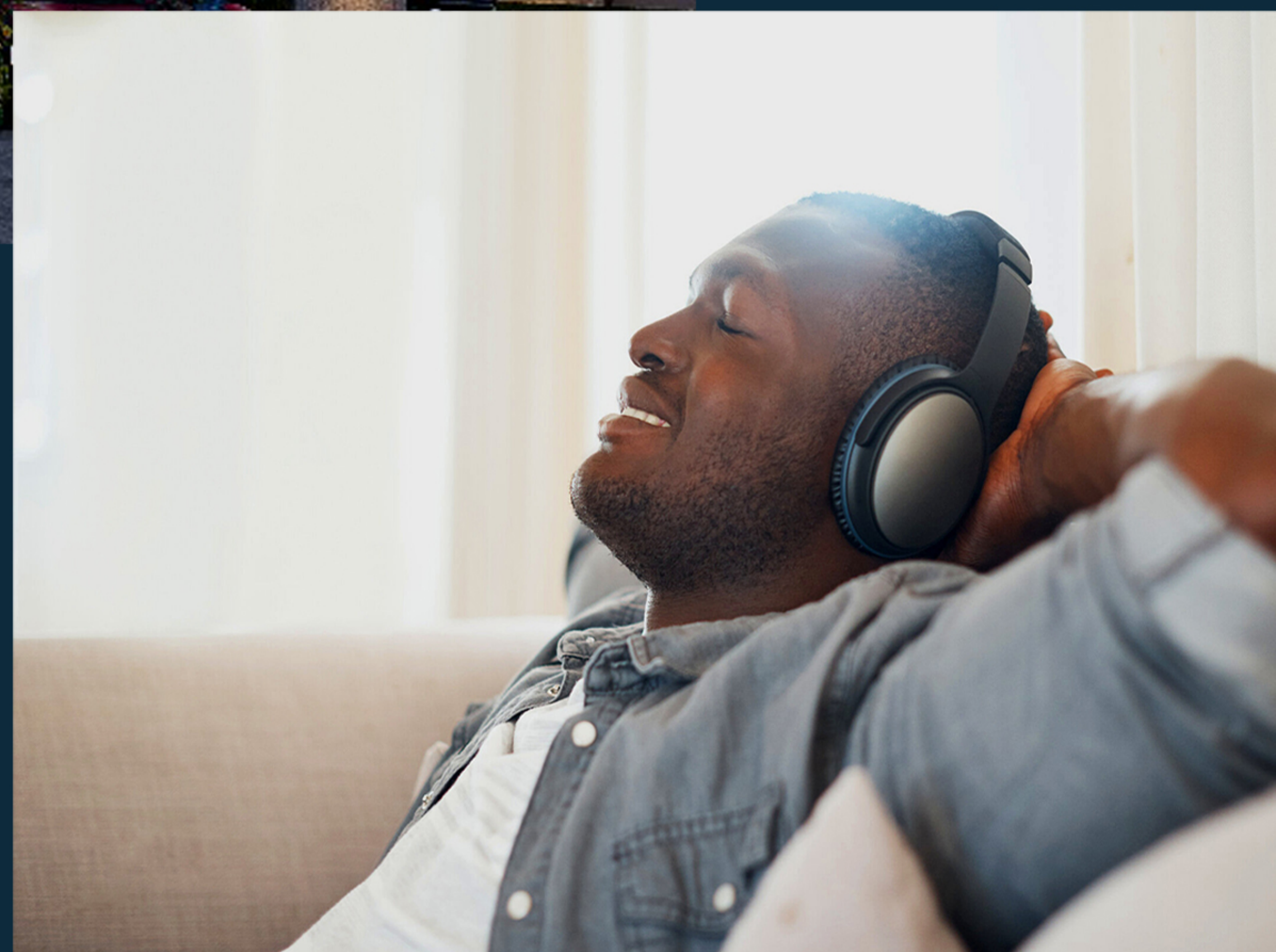
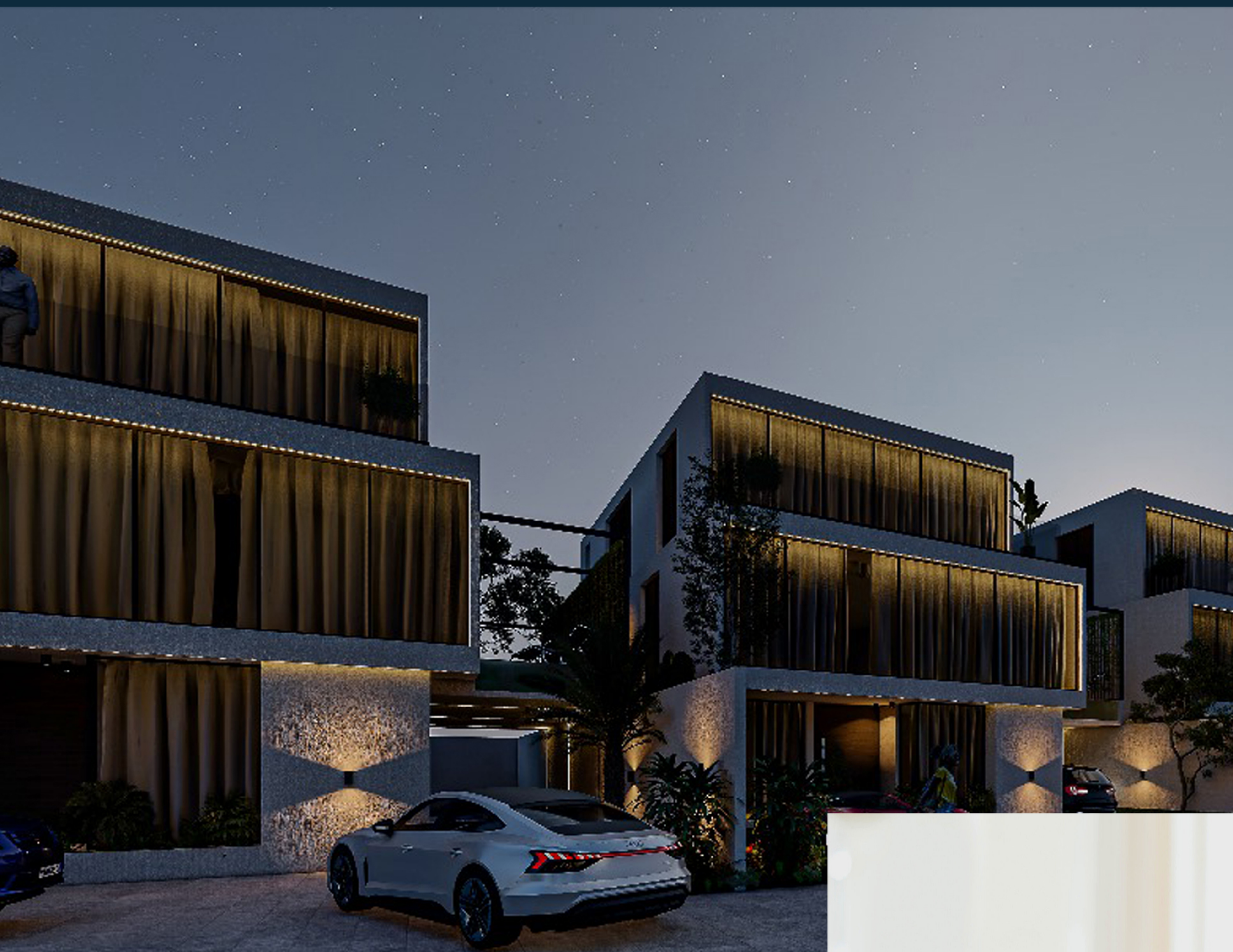
### **TRAVEL**

- Kotoka International Airport

### **HOSPITALS**

- Akai House Clinic
- Bank of Ghana Hospital
- Nyaho Medical Centre
- Euracare Advanced Diagnostics and Heart Centre
- Healthnet Airport Medical Centre





# LIFE HERE IS NOTHING SHORT OF A DREAM

Imagine a home that  
allows you to  
amplify your unique  
lifestyle



# PRICING SCHEDULE

DEVELOPMENT STAGE	PRICE
RESERVATION FEE & COMMITMENT	\$25,000
SITE CLEARANCE	\$650,000
FOUNDATION	\$700,000
LINTEL LEVEL	\$800,000
FIRST FLOOR SLAB WORK	\$850,000
SECOND FLOOR SLAB WORK	\$900,000
ROOFING	\$1,000,000
FINISHING WORKS	\$1,300,000
ON COMPLETION	\$1,500,000 (FULLY FURNISHED)

# PAYMENT PLAN (24 MONTHS)

RESERVATION FEE: \$25,000

## A

FIRST INSTALLMENT

**25%**

21 days after  
payment of  
reservation fee

SECOND INSTALLMENT

**15%**

90 days after

THIRD INSTALLMENT

**15%**

90 days after

FOURTH INSTALLMENT

**10%**

90 days after

FIFTH INSTALLMENT

**10%**

90 days after

SIXTH INSTALLMENT

**10%**

90 days after

SEVENTH INSTALLMENT

**10%**

90 days after

FINAL INSTALLMENT

**5%**

90 days after

## B

FIRST INSTALLMENT

**10%**

21 days after  
payment of  
reservation fee

SECOND INSTALLMENT

**20%**

90 days after

THIRD INSTALLMENT

**20%**

90 days after

FOURTH INSTALLMENT

**5%**

90 days after

FIFTH INSTALLMENT

**10%**

90 days after

SIXTH INSTALLMENT

**15%**

90 days after

SEVENTH INSTALLMENT

**10%**

90 days after

FINAL INSTALLMENT

**10%**

90 days after



Home's not merely roof and room,  
It needs something to endear it;  
Home is where the heart can bloom,  
Where there's some kind lip to cheer it!  
What is home with none to meet,  
None to welcome, none to greet us?  
Home is sweet, -and only sweet-  
When there's one we love to meet us!

CHARLES SWAIN

























**HERE, YOU WILL FIND A COMMUNITY BROUGHT TOGETHER  
NOT ONLY BY THE FINEST THINGS IN LIFE BUT WHERE LIFE  
FEELS TRULY EXTRAORDINARY.**



Scan to find  
property details